

WESTLAKE AMENITY PARCEL

BEING A REPLAT OF O.S.T. 3 AS SHOWN ON TOWN CENTER PARKWAY NORTH,
RECORDED IN PLAT BOOK 123, PAGES 106 THROUGH 118, INCLUSIVE, TOGETHER
WITH A PORTION OF SECTION 1, TOWNSHIP 43 SOUTH, RANGE 40 EAST,
CITY OF WESTLAKE, PALM BEACH COUNTY, FLORIDA

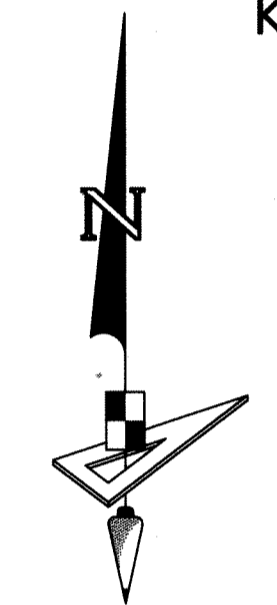
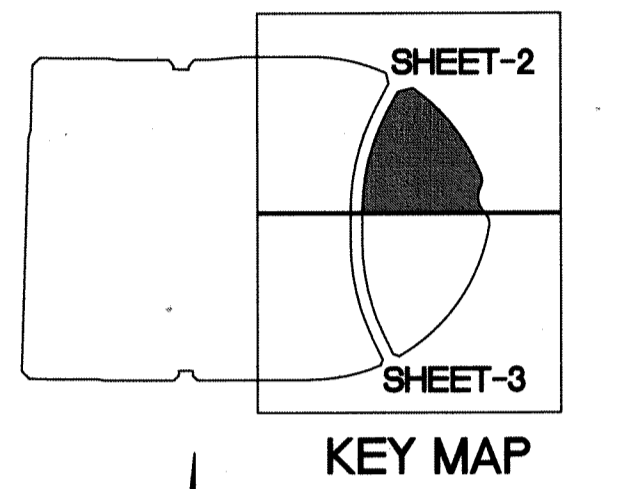
NORTHEAST CORNER SECTION 6-43-41
FOUND BRASS DISK IN CONCRETE "P.B.C."
N:884609.6818 E:891407.3638
NAD83 (2007 ADJUSTMENT)
CERTIFIED CORNER RECORD #107591

66

BASIS OF BEARING
NORTH BOUNDARY OF SECTION 6,
TOWNSHIP 43 S., RANGE 41 E.
S.89°48'53"E., 5270.23' (MEASURED)
S.89°48'52"E., 5270.39' (COUNTY)

POINT OF COMMENCEMENT
NORTHEAST CORNER OF
SECTION 1, TOWNSHIP 43 S., RANGE 40 E.
SET 3.5" IRON PIPE "PUBLIC LAND SURVEY
CORNER-TALLAHASSEE MERIDIAN"
BRASS DISK "10' EAST" SET IN CONCRETE
FOUND 10' EAST ON SECTION LINE
N: 884626.7147 - E: 886137.1629
NAD83 (2007 ADJUSTMENT)
CERTIFIED CORNER RECORD #107597

EAST 1/4 CORNER SECTION 1-43-40
BRASS DISK IN CONCRETE "P.B.C."
CERTIFIED CORNER RECORD # 107599
N:881943.9584 (83/07)
E:886064.5056 (83/07)



SCALE: 1" = 60'

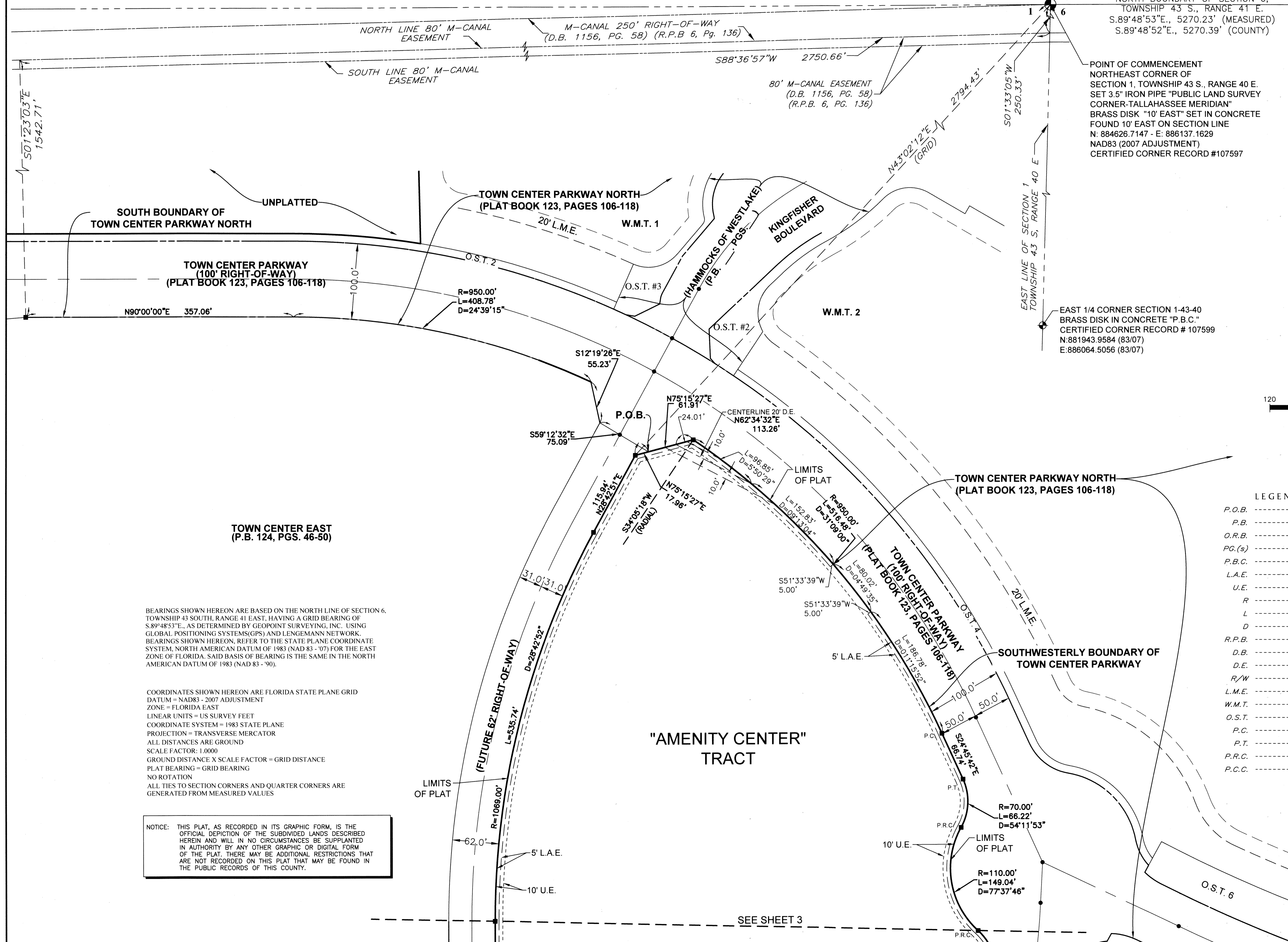
LEGEND

- P.O.B. ----- POINT OF BEGINNING
- P.B. ----- PLAT BOOK
- O.R.B. ----- OFFICIAL RECORDS BOOK
- PG.(s) ----- PAGE(S)
- P.B.C. ----- PALM BEACH COUNTY
- L.A.E. ----- LIMITED ACCESS EASEMENT
- U.E. ----- UTILITY EASEMENT
- R ----- RADIUS
- L ----- ARCH LENGTH
- D ----- DELTA ANGLE
- R.P.B. ----- ROAD PLAT BOOK
- D.B. ----- DEED BOOK
- D.E. ----- DRAINAGE EASEMENT
- R/W ----- RIGHT-OF-WAY
- L.M.E. ----- LAKE MAINTENANCE EASEMENT
- W.M.T. ----- WATER MANAGEMENT TRACT
- O.S.T. ----- OPEN SPACE TRACT
- P.C. ----- POINT OF CURVATURE
- P.T. ----- POINT OF TANGENCY
- P.R.C. ----- POINT OF REVERSE CURVATURE
- P.C.C. ----- POINT OF COMPOUND CURVATURE

BEARINGS SHOWN HEREON ARE BASED ON THE NORTH LINE OF SECTION 6, TOWNSHIP 43 SOUTH, RANGE 41 EAST, HAVING A GRID BEARING OF S.89°48'53"E., AS DETERMINED BY GEOPPOINT SURVEYING, INC. USING GLOBAL POSITIONING SYSTEMS (GPS) AND LENGEMANN NETWORK. BEARINGS SHOWN HEREON, REFER TO THE STATE PLANE COORDINATE SYSTEM, NORTH AMERICAN DATUM OF 1983 (NAD 83 - '07) FOR THE EAST ZONE OF FLORIDA. SAID BASIS OF BEARING IS THE SAME IN THE NORTH AMERICAN DATUM OF 1983 (NAD 83 - '90).

COORDINATES SHOWN HEREON ARE FLORIDA STATE PLANE GRID DATUM = NAD83 - 2007 ADJUSTMENT
ZONE = FLORIDA EAST
LINEAR UNITS = US SURVEY FEET
COORDINATE SYSTEM = 1983 STATE PLANE
PROJECTION = TRANSVERSE MERCATOR
ALL DISTANCES ARE GROUND
SCALE FACTOR: 1.0000
GROUND DISTANCE X SCALE FACTOR = GRID DISTANCE
PLAT BEARING = GRID BEARING
NO ROTATION
ALL TIES TO SECTION CORNERS AND QUARTER CORNERS ARE GENERATED FROM MEASURED VALUES

NOTICE: THIS PLAT, AS RECORDED IN ITS GRAPHIC FORM, IS THE OFFICIAL DEPICTION OF THE SUBDIVIDED LANDS DESCRIBED HEREIN AND WILL IN NO CIRCUMSTANCES BE SUPPLANTED IN AUTHORITY BY ANY OTHER GRAPHIC OR DIGITAL FORM OF THE PLAT. THERE MAY BE ADDITIONAL RESTRICTIONS THAT ARE NOT RECORDED ON THIS PLAT THAT MAY BE FOUND IN THE PUBLIC RECORDS OF THIS COUNTY.



SEE SHEET 3

GeoPoint
Surveying, Inc.

4152 W. Blue Heron Blvd. Phone: (561) 444-2720
Suite 105 www.geopointsurveying.com
Riviera Beach, FL 33404 Licensed Business Number 18 7768

Sheet No. 2 of 3 Sheets